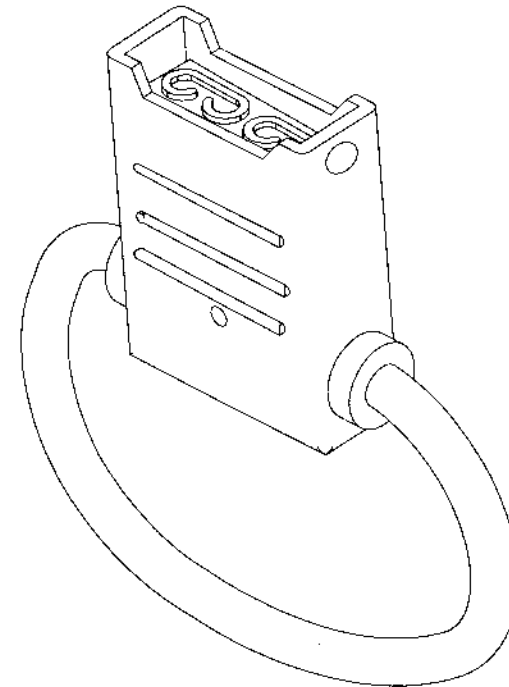
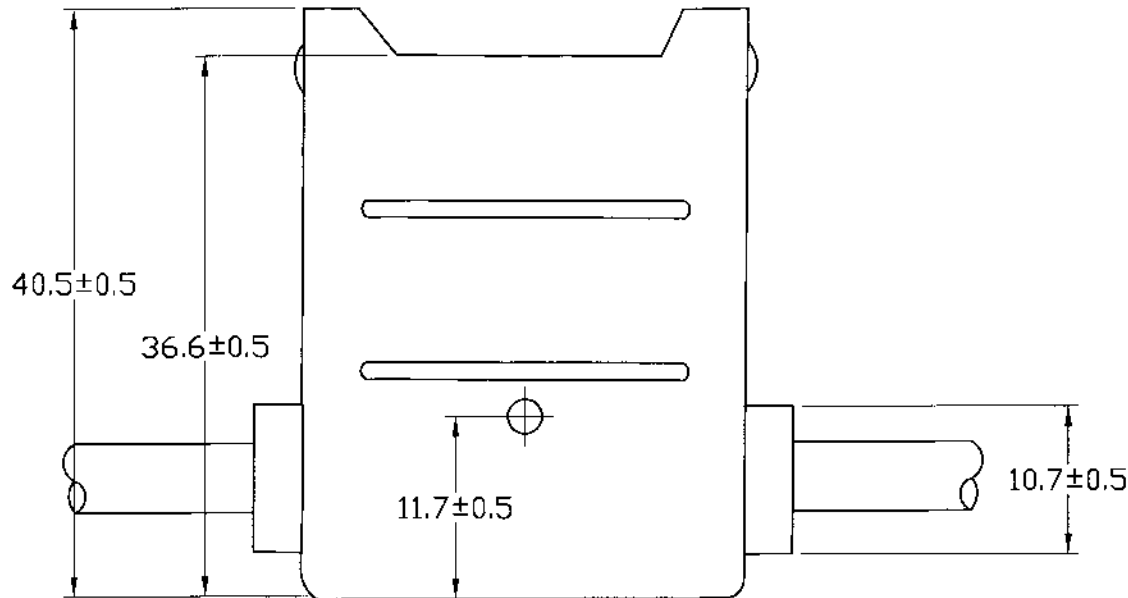
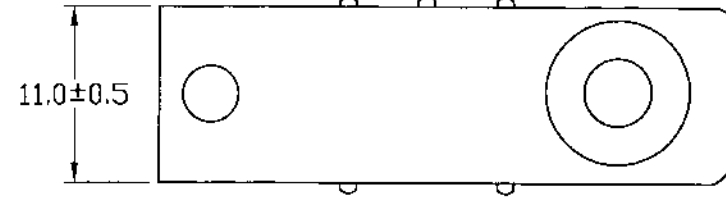
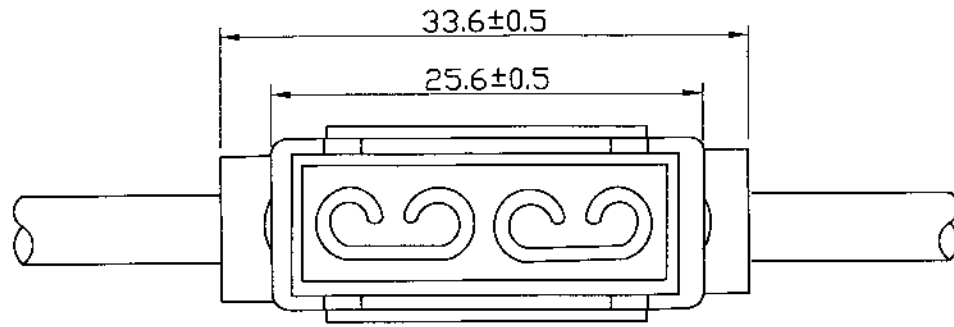


△	REV	DESCRIPTION	DATE	E.C.N.
	1.0	Initial Release		


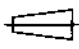


**IN-LINE FUSEHOLDER FOR ATC FUSES
SPECIFICATIONS:**

Electrical: Rated for currents up to 30A

Insulating Body: PVC

Contacts: Brass

UNLESS OTHERWISE SPECIFIED DIMENSIONS ARE IN MM TOLERANCE DECIMALES ANGULAR xx ± ± 1° xxx ± DO NOT SCALE DRAWING	CONTRACT NO.	TITLE FUSE HOLDER
	DRAWN BY	
 	CHECKED BY	PART NO. TR -504
	DESIGNED BY	
MATERIAL	DATE: 01/05/04	DRAWING NO. BA04010515
TREATMENT	SCALE	